

**U.S. Army Corps of Engineers
Fiscal Year 2018
Handshake Program Application**

Please review instructions before completing application!

Corps Lake/River Project Name: **Melvorn Lake Project**
District / Division: **Kansas City District, Northwestern Division**
Handshake Proposal Title: **Marsh of the Swans Rehabilitation**
Corps POC Name: **Curtis Keller**
Telephone: **(816) 389 - 3095** ext.
E-Mail: **curtis.b.keller@usace.army.mil**

A. Checklist:

1. Will the Handshake funds be spent on Corps facilities and resources that are being fully maintained by the Corps? (not in outgranted parks) ☒ **Yes** ☐ **No**
 2. Will the Challenge Partnership agreement be with a non-federal public or private entity(ies)? ☒ **Yes** ☐ **No**
 3. Is the proposed activity within current authorities and contained in the annual or 5-year work plan in the approved lake project OMP? ☒ **Yes** ☐ **No**
 4. Have all of the NEPA requirements been considered for this project? ☒ **Yes** ☐ **No**
 5. I am aware the Challenge Partnership Agreement must be reviewed and Approved by District Office of Counsel before sending to HQUSACE. ☒ **Yes** ☐ **No**
 6. If the full funding amount requested is not available, could a portion of this Handshake Project be completed with partial funding? ☒ **Yes** ☐ **No**
 7. I am aware that all government funds must be spent in accordance with FAR, DFAR and AFAR contracting laws and regulations, and that Handshake funds cannot be provided to the partner(s). ☒ **Yes** ☐ **No**
 8. Did you participate in a Handshake Webinar in 2017 or review a 2017 Handshake Webinar on the Gateway? ☒ **Yes** ☐ **No**
-

B. Handshake Funding Request (maximum \$20,000): \$20,000

C. Incentive Points Category: Check the appropriate box if your application qualifies to receive bonus points on the evaluation score.

- ☐ This Lake/River Project has never received Handshake funding (200 points).
- ☐ This Lake/River Project has received Handshake funding, but more than 10 years ago (FY 04 to FY 08 program funds) (150 points).
- ☒ This Lake/River Project has received Handshake funding, between 5 - 10 years ago (FY 09 to FY 13 program funds) (100 points).

D. Describe your partnership and the proposed Handshake Partnership Project:

Project applications will be evaluated on the categories below. Please complete each section as appropriate.

Summary Statement:

Handshake funds will be used to restore and further expand plant communities and management capabilities of the Marsh of the Swans by: adding a waterline as a means of flooding the wetland area; establishing pollinators and establishing a walking trail around the wetland. With the addition of the waterline, each of the four cells within the wetland will have their own shut off valve so rotational filling can be accomplished. This will enable some cells to remain dry for maintenance activities while other cells remain full of water for habitat management, recreational and environmental benefits. This effort supports better management of the area, and reduces the amount of chemicals and physical labor needed for maintenance. Pollinator attractive plants will be planted along the entire west and south border of the wetland. The planting aligns with the objectives of the National Pollinator Initiative - to reverse the continued decline of our pollinator populations, a vital and necessary resource that needs protected. Interpretive signs will be strategically placed along the walking trail to educate users on wetland life and management practices, and the importance/management of pollinators. Handicap accessible viewing blinds will also be placed where users can enjoy watching wildlife around the wetland habitat.

Longevity / O&M description:

This project involves enhancing a wetlands and expansion of plant communities nearby that will provide a haven and habitat for migrating waterfowl and wetland species. Work will include: adding a waterline with shut-off valves to the Marsh of the Swans to allow for rotational filling; a self-guided walking trail around the wetland with interpretive signage and educational pamphlets; planting 17 acres with pollinator attractive plants and native grass mix and providing accessible bird blinds for wildlife watching. The expected lifespan of this project should reach or exceed the 20-year mark. With routine and sustained maintenance the facilities may last well beyond 20 years. Labor from volunteers will be used to provide the routine maintenance of the area and trail. A combination of labor from the Corps, Duck's Unlimited and the Kansas Department of Wildlife and Parks will be used for any needed major maintenance work.

Partnership Value:

The Corps of Engineers, and Duck's Unlimited will manage the project to provide a high-quality sanctuary for migrating waterfowl and other wetland species. Ducks Unlimited is very excited about the project due to the educational value for migrating waterfowl and wetland areas. School groups will be able to do field trips and/or research projects on the area.

Recreational Benefit:

Located between two major highways, this area is easily visible and accessible to the public. The ability to fill the marsh on an as-needed basis will support a large variety of waterfowl and other shore birds. This will in turn provide birding opportunities for the visitor, as will the accessible viewing blinds being installed. The pollinators will provide great habitat for insects and other animals relying on native wildflowers. The walking trail can be used for exercise in an outdoor environment. Signage along the trail will offer interpretive and educational opportunities to the visitor.

Environmental Stewardship Value:

The addition of 17 acres of pollinator attractive plants and native grass mix over most of the dry land around the marsh will provide an excellent habitat for pollinators, birds, insects and animals. Greater control of noxious weeds such as *Sericea Lespedeza* will also occur once the pollinators and native grasses are established. The capability of pumping and controlling the water level of each wetland cell will enhance moist soil vegetation to provide dependable food sources for waterfowl and other wetland birds. Controlling the water level of the cells will significantly improve the waterfowl habitat along with shore bird habitat by offering them critical resting, feeding, and staging areas along their central flyway. This area will offer significant research opportunities for schools, stewardship groups and organizations.

Communication & Education Value:

This entire project will offer a tremendous source of education and interpretation to the visitor. They will learn about the importance of pollinators and the management of pollinators, as well as the importance and management of wetlands - two ecosystems that are in great need of conservation and preservation. The education visitors receive might also spark a desire by them to incorporate what they learn into how they tend their own yards, water features, and gardens. A self-guided walking trail pamphlet will be available to educate users of the walking trail. Staff guided tours will be available upon request. Schools and educational facilities in the area can use the Marsh of the Swans facility for field trips and research projects to expand student learning. The Marsh of the Swans will provide current and future generations with a greater understanding of the importance and value of our natural resources.

Innovativeness:

This project would create a one-of-a kind marsh in this area. That is, a marsh that will be closed to hunting, but open to other recreational and stewardship opportunities that will provide habitat, and sanctuary support for birds, insects, mammals and aquatic life, while educating the user on the true value of wetlands, habitat management, species management, pollinator plants and pollinators. Visitors can connect with the environment while recreating on the trail and learn the importance of flyways for migratory birds, and the unique bird, plant, insect, and mammal life of the wetlands.

Conclusion:

The Melvern Lake Project has been successful with and appreciative of the Handshake money they have received in the past. The funds have been a great incentive for the staff to build on relationships with current partners and establish new ones in the local community. If selected to be the recipient of Handshake funding, the Marsh of the Swans Wetland Project will go a long way towards connecting the general public with the great outdoors.

Double click on spreadsheet to access data entry fields and to enter Partner names. **You MUST enter partner names into the spreadsheet:**

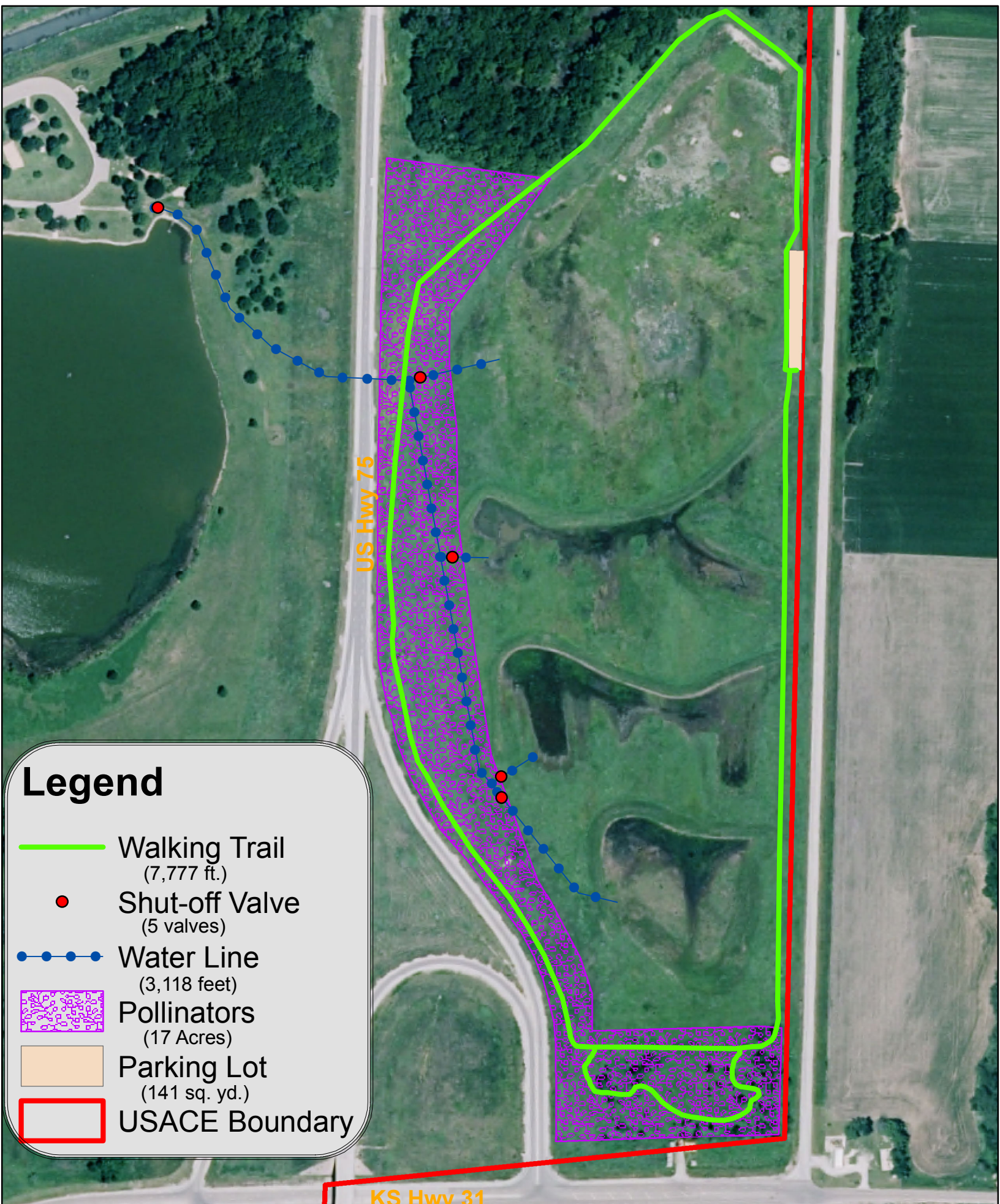
	Local Corps Office	Handshake Funds	Duck Unlimited	Partner 2	Partner 3	Partner 4
Salaries	\$3,500	N/A	\$2,000	\$0	\$0	\$0
Travel	\$0	N/A	\$1,000	\$0	\$0	\$0
Materials and Supplies	\$500	\$16,000	\$0	\$0	\$0	\$0
Equipment Use	\$1,500	\$4,000	\$0	\$0	\$0	\$0
Funds Contributed	N/A	N/A	\$1,500	\$0	\$0	\$0
Personal Property	N/A	N/A	\$0	\$0	\$0	\$0
Volunteer	N/A	N/A	\$2,000	\$0	\$0	\$0
In-Kind Services	N/A	N/A	\$0	\$0	\$0	\$0
Other (explain below)	\$0	\$0	\$0	\$0	\$0	\$0
Total	\$5,500	\$20,000	\$6,500	\$0	\$0	\$0
Share of Total Cost	17.2%	62.5%	20.3%	0.0%	0.0%	0.0%
	79.7%					

	Partner 5	Partner 6	Partner 7	Partner 8	Partner 9	Partner 10
Salaries	\$0	\$0	\$0	\$0	\$0	\$0
Travel	\$0	\$0	\$0	\$0	\$0	\$0
Materials and Supplies	\$0	\$0	\$0	\$0	\$0	\$0
Equipment Use	\$0	\$0	\$0	\$0	\$0	\$0
Funds Contributed	\$0	\$0	\$0	\$0	\$0	\$0
Personal Property	\$0	\$0	\$0	\$0	\$0	\$0
Volunteer	\$0	\$0	\$0	\$0	\$0	\$0
In-Kind Services	\$0	\$0	\$0	\$0	\$0	\$0
Other (explain below)	\$0	\$0	\$0	\$0	\$0	\$0
Total	\$0	\$0	\$0	\$0	\$0	\$0
Share of Total Cost	0.0%	0.0%	0.0%	0.0%	0.0%	0




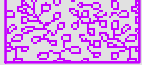
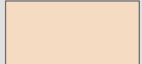

	Partner 11	Partner 12	Partner 13	Partner 14	Partner 15	Total
Salaries	\$0	\$0	\$0	\$0	\$0	\$5,500
Travel	\$0	\$0	\$0	\$0	\$0	\$1,000
Materials and Supplies	\$0	\$0	\$0	\$0	\$0	\$16,500
Equipment Use	\$0	\$0	\$0	\$0	\$0	\$5,500
Funds Contributed	\$0	\$0	\$0	\$0	\$0	\$1,500
Personal Property	\$0	\$0	\$0	\$0	\$0	\$0
Volunteer	\$0	\$0	\$0	\$0	\$0	\$2,000
In-Kind Services	\$0	\$0	\$0	\$0	\$0	\$0
Other (explain below)	\$0	\$0	\$0	\$0	\$0	\$0
Total	\$0	\$0	\$0	\$0	\$0	\$32,000
Share of Total Cost	0.0%	0.0%	0.0%	0.0%	0.0%	100%

Explanations:

2018 Marsh of Swans Upgrade



Legend

-  Walking Trail
(7,777 ft.)
-  Shut-off Valve
(5 valves)
-  Water Line
(3,118 feet)
-  Pollinators
(17 Acres)
-  Parking Lot
(141 sq. yd.)
-  USACE Boundary

US Hwy 75

KS Hwy 31